

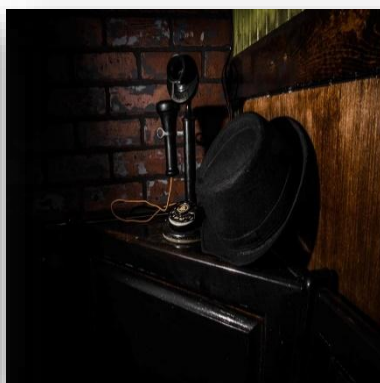
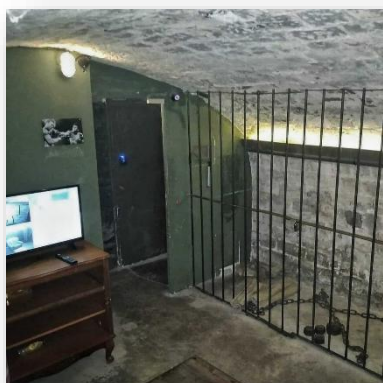
Mafia Escape Room

You are locked in. You have 60 minutes.

You must solve your way out. Will you escape?!

Escape rooms are immersive live-action experience that challenge players to solve a series of puzzles and riddles within a set time limit to find their way out of mysterious rooms. Players are locked in the room and must work together to uncover clues, solve puzzles, and ultimately find the key to unlock the door and escape.

Escape rooms offer an unforgettable adventure that combines teamwork, problem-solving, and excitement. From uncovering clues to solving riddles, each step takes you closer to unlocking the mystery and ultimately escaping the room. With various themes and difficulty levels, escape rooms cater to different interests and skill levels, making it an ideal activity for all ages and groups. The games are very thrilling, requires no physical exertion, and not dangerous at all.

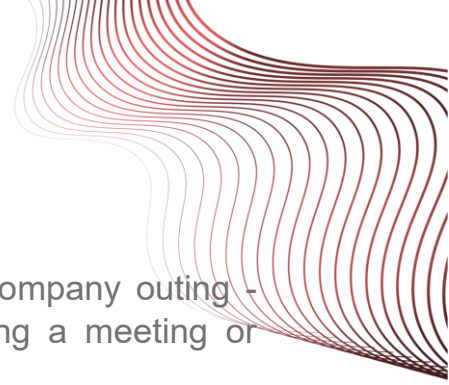


Storyline:

You've made a grave mistake by crossing into Mafia territory, and now you're a marked person. With a bounty on your head, you must stay alive and evade the Mafia's relentless pursuit. As you dodge their traps and outmaneuver their goons, you'll have to call on all your wit and cunning to escape their clutches.

Activity Details:

Duration	Group Size	Physicality	Venue
1.5 hours	2 – 12	Low	indoor



This Activity is Ideal for:

Staff gathering - Building new teams - Staff celebration - Company outing - Teams development - Improving communication - Energizing a meeting or conference - Public holidays - School trips - Birthday parties.

Playing Modes:

Our escape rooms offer exciting modes for groups of up to 6 players:

- 1. Standard Mode:** This mode allows one group to play a full game for 60 minutes, immersing themselves in a challenging and immersive environment that will test their problem-solving skills to the limit.
- 2. Challenge Mode:** For those seeking a competitive edge, our challenge mode pits two groups of up to 6 players each against each other in the same escape room, with one group attempting to escape while the other tries to catch them before they do.
- 3. Double Challenge Mode:** In this mode, each group plays two full games each for 60 minutes, doubling the excitement and challenge.
- 4. Tournament Mode:** This mode lets up to 8 groups compete over 4 rounds in different escape rooms, with the final round between the two groups who have won all rounds determining the ultimate winner. Whatever your group's preferences, our escape rooms are sure to provide an unforgettable and immersive experience.

Tailoring:

Mazecs Activities are all about customization. Would you like specific duration, special event requirements, elements of company branding, culture theme and/or mission statement woven into your team building program? Just tell us what you have in mind.